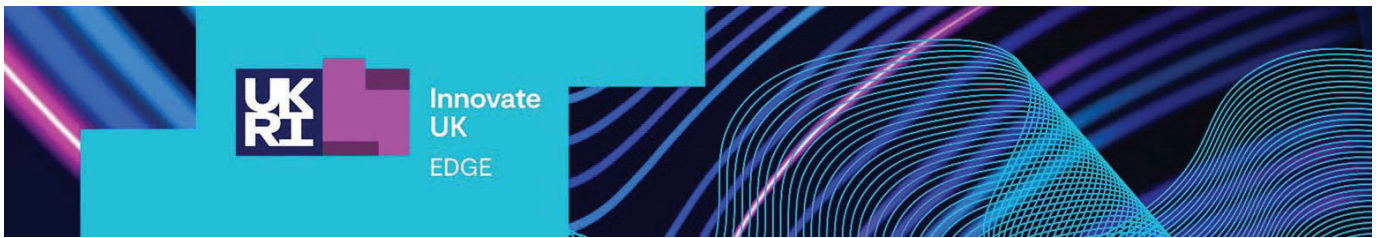


## GLOBAL INCUBATOR PROGRAMME APPLICATION FORM AGRI-TECH – AUSTRALIA

This is the full application form for the Global Incubation Programme for Agri-Tech, Australia. This is a three-stage programme, including preparation workshops, market visits, incubation and subsequent exploitation of the programme. By applying for a place onto this programme, businesses commit to all four phases and to working with an Innovate UK EDGE Innovation Growth Specialist who will provide support. All fields are mandatory.

To complement the application, a separate company pitch-deck should be attached to your online submission. Please contact Bradley Rowley ([bradley.rowley@innovateukedge.ukri.org](mailto:bradley.rowley@innovateukedge.ukri.org)) should you require any additional information of support with your application.

Company Name:	
Company Reg No:	
Website:	
Applicant Name:	
Applicant Position:	
Email Address:	
Mobile Number:	
Company Stage:	<i>Pre-Seed/ Seed/ Early Stage/ Growth/ Scale</i>
Number of employees	
Annual turnover	
Sector:	
International cooperation: <i>Please use this field to indicate if you are already involved in international activities.</i> <i>If yes please provide a brief description and also mention if you have previously participated in a Global Business Innovation Programme</i>	



## **PARTICIPATING IN THE PROGRAMME**

The Global Incubation Programme on Agri-Tech, Australia, will comprise of representatives from innovative UK businesses that are looking to grow and scale in Australia.

Business representatives will be provided with a structured programme consisting of four phases:

**Stage 1** – Prepare & Participate: Incubation (from November 2022)

**Stage 2** – Pursue: Market visits (from February 2023)

**Stage 3** – Exploit: Work with your UK adviser to build on the programme (March 2023 – June 2023)

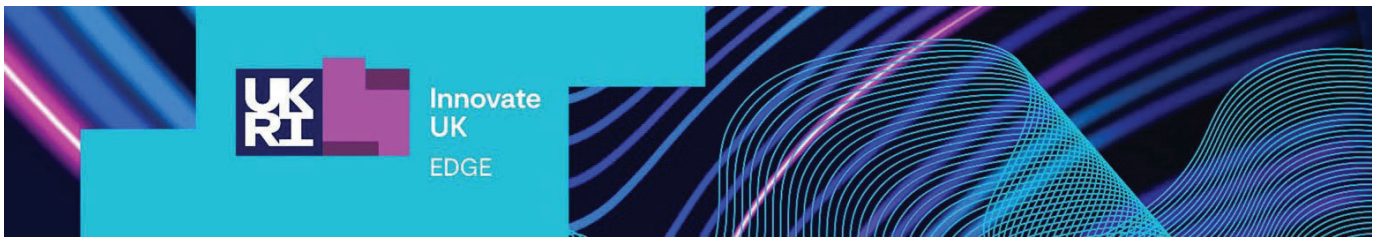
Each phase is made up of distinct activities. Successful applicants will be asked to produce a Strategic Development Plan for the programme and will be allocated an Innovate UK EDGE Innovation and Growth Specialist who will provide support.

**By submitting an application to the Global Incubator Programme you are agreeing to take part in all elements of the programme. The applicant should be the person who will take part in the programme.**

- 1) Please give a short description of the new product(s) and/or service(s) your business is developing – what is innovative about them and why do you think they fit the scope? Also state at what stage the new product or service you are developing is at (i.e. in early R&D phase, prototyping/testing or full product in the market) (1000 characters max)

## **EXPERIENCE AND AIMS**

- 2) What do you think your company could achieve from participating in the programme? i.e. how will this support your growth strategy in terms of building partnerships and collaborations and increasing turnover, employee numbers, increase profits, etc. (1000 characters max)



- 3) Why are you specifically interested in working with the Australian market and what is your understanding of the competitive landscape (identify where possible the UK market conditions vs the Australia market conditions)? Also explain how will working with Australian collaboration partners help further develop or/and further exploit your innovation (1500 characters max)

[Redacted response area]

- 4) Describe your team and why they are well positioned to tackle, and have the resources to commit to this market opportunity. (1000 characters max)

[Redacted response area]

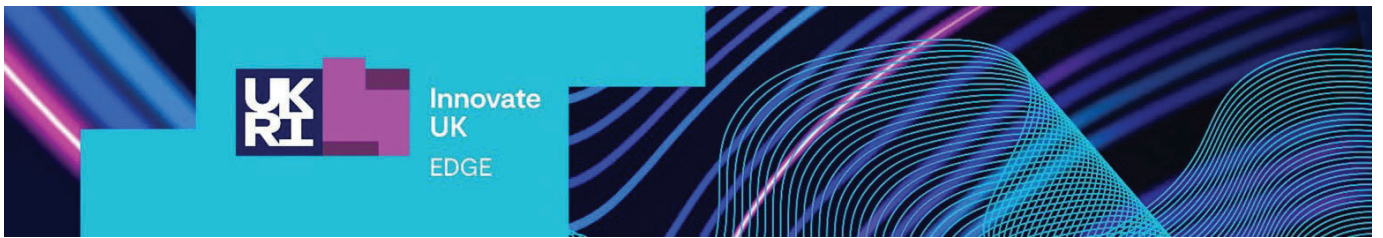
- 5) What is the impact of your technology or business? (1000 characters max)

[Redacted response area]

- 6) What is the scalability of your business model? (1000 words max)

[Redacted response area]

Exam



## EQUALITY, DIVERSITY AND INCLUSION

We are committed to ensuring that there are no barriers to enabling diverse participation in the programme.

### 6. Disability

Are your activities ever affected by a disability, impairment or long-term illness which has lasted, or is expected to last, at least 12 months?

- Yes
- No
- Prefer not to say
- If yes, please specify [free text]

### 7. Age

What is your age?

- >19
- 20-29
- 30-39
- 40-49
- 50-59
- 60+
- Prefer not to say

### 8. Gender

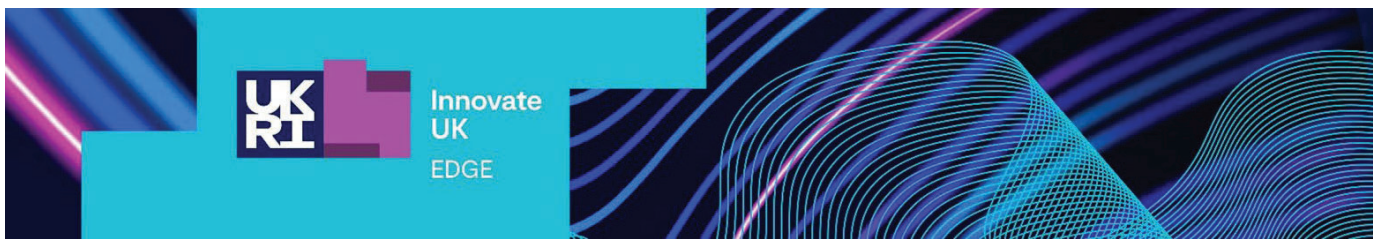
Please can you tell us your gender?

- Female
- Male
- Prefer not to say
- Prefer to self describe [free text]

### 9. Ethnicity

Please can you tell us your ethnicity?

- Asian / Asian British
- Black / African / Caribbean / Black British
- Mixed / multiple ethnic groups
- Other ethnic group
- Prefer not to say
- White



## ELIGIBILITY & SELECTION

Recruitment of businesses into the Global Incubator Programme will be in three stages: -

### First Stage Selection - application and suitability criteria

This application form will be used for the recruitment of businesses onto the programme and will be managed by the Innovate UK EDGE Delivery Manager on behalf of Innovate UK. To participate in this Global Incubator Programme your business must be established in the UK. If your business is not registered in the UK, your application will be rejected.

The Global Incubator Programme is designed to support businesses to grow and scale. Businesses with up to 500 employees (in Northern Ireland with fewer than 250 employees, a turnover of less than €50 million, or a balance sheet total of less than €43 million) are eligible to apply though this could include early stage, micro and mature businesses. There are no firm guidelines on turnover requirements.

The following criteria will be used to shortlist the applicants at the first stage:

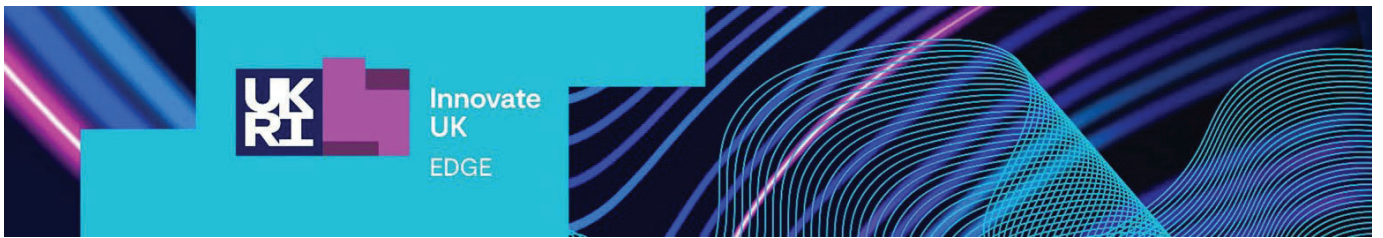
1. **Programme fit:** Must be a highly innovative company and fit with the Global Incubation Programme focus
2. **Ambition:** Must show ambition for growth and how participating in the programme can help them to achieve this.
3. **Product market fit:** The product has the potential to fit with the ecosystem and market of the partner country.
4. **Capability:** Must have sufficient expertise and resources to exploit the opportunities from the programme
5. **Level of innovation impact:** Given the competitive markets of the Global Incubation Programme, the company should offer a strong product or service which has a positive impact, including economic and societal benefit.

### Second Stage Selection – panel interviews

A panel comprising a Lead Adviser from the Innovate UK EDGE Partner team, the relevant Innovate UK Innovation Lead(s) and the Global Incubator Programme Manager and representatives from Cultivator will shortlist the applicants and conduct short interviews with businesses. Further details will be provided after first stage process completed.

### Third Stage - financial checks

Innovate UK will undertake financial background checks on the businesses (or directors if company is less than 3 years old) to ensure the business is viable and does not have any outstanding County Court Judgements (CCJs).



There are a limited number of places available on each Global Incubator Programme and only businesses that have passed these three stages, and have scored highly, will be offered a place on the programme.

Should travel restrictions permit, only one participant per company will be eligible for a funded place on a programme – second and subsequent delegates are able to apply to attend but would need to pay their own expenses. It is possible for multiple representatives from the same company to take part in the programme but we would only fund one representative at a time.

### **Businesses that have taken part in previous Global Incubator Programmes**

Companies who have taken part in a previous Global Incubator Programme are not eligible to participate in any new programmes unless by exception where clear additional benefit and impact can be demonstrated through the application process. These applications should be treated as exceptional.

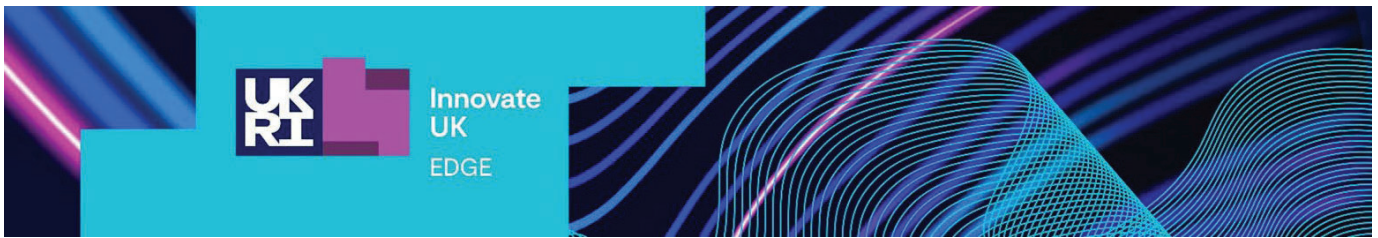
### **Subsidy Control**

Businesses up to 500 employees (249 in Northern Ireland) can receive up to a maximum amount of £344,600 (€200,00 in Northern Ireland) of innovation advisory and support services provided through Innovate UK EDGE over a rolling 3-year period. The limit of £344,600 relates purely to the support that a business receives through Innovate UK EDGE and is not related to what was previously de minimis support or similar types of support provided by others.

### **Existing Innovate UK support**

Please list any grants or other support that you have previously received from Innovate UK or through Innovate UK EDGE or Enterprise Europe Network. Please provide Year | Amount of grant received | Programme

Year	Amount of grant received	Programme
[Redacted]		



## TERMS & CONDITIONS

Each participant in the programme is expected to complete the formal contract with Innovate UK, and the payment of a £1000 deposit which will be refunded on the full completion of the programme. The contract also details our expectations if the company should leave the programme without adequate reason.

Innovate UK has the following expectations of participants:

- **Be committed** – be involved in all parts of the programme and play an active role.
- **Maximise your chances** – work closely with the advisors.
- **Demonstrate sufficient investment** – ensure that you have the resources to participate effectively.
- **Develop and implement an impact focused strategic development plan** – working closely with your adviser.
- **Engage an appropriate representative in the programme** – discuss this with your adviser.
- **Support and challenge each other.**

*We take your data very seriously and are committed to the privacy and security of it. [Our Privacy Statement](#) explains the types of personal data we may collect about you and how we'll store and handle that data, and keep it safe. This is a joint programme and your data will be shared with Innovate UK and our partner incubator for the purposes of administering & following up this programme.*

*By submitting this application, you are giving permission to our overseas partners to confidentially store and review this information for the purposes of intake into the program. You are also representing that all information provided is true and accurate to the best of your knowledge.*

*Should you be offered a place on the Agri-Tech Global Incubator Programme in Australia, you would be expected to agree to the terms and condition policy as set out by our partners, and will be required to sign a programme agreement with both Innovate UK and our programme partners.*